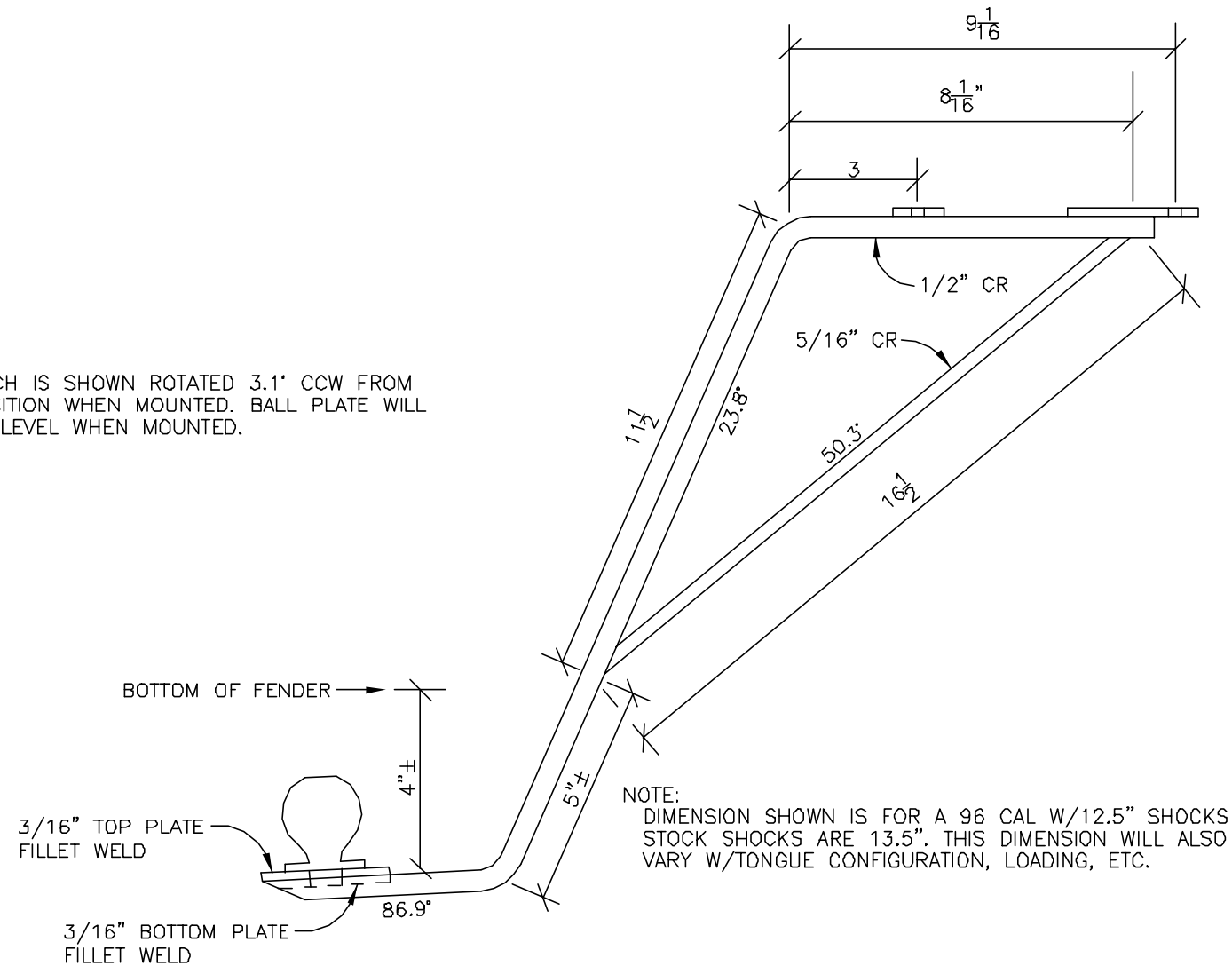
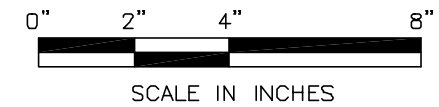
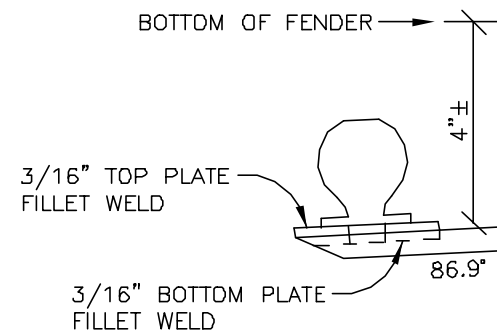


- DESIGNTECH ENGINEERING LLC. SHALL ASSUME NO LIABILITY FOR THE SUITABILITY OR LACK THEREOF OF THIS HITCH DESIGN. USE IT AT YOUR OWN RISK. THIS PRESENTATION IS FOR DIMENSIONS ONLY.
- HITCH BOLTS TO THE LUGGAGE MOUNT TABS UNDER THE UPPER FRAME. REPLACE THE STOCK BOLTS WITH METRIC GRADE 12.9 BOLTS AND USE A SIMILAR GRADE LOCK WASHER.
- ALL LINEAR DIMENSIONS ARE IN INCHES. ALL ANGULAR DIMENSIONS ARE IN DEGREES. ANGULAR DIMENSIONS OF LINES ARE FROM EITHER HORIZONTAL OR VERTICAL AS APPROPRIATE TO THE VIEW.
- HITCH AS SHOWN WAS DESIGNED FOR A CYCLEMATE CM-1000 TRAILER (GVW = 325 LBS) AND MAY NOT BE SUITBLE FOR LARGER TRAILERS.

NOTE:
HITCH IS SHOWN ROTATED 3.1° CCW FROM POSITION WHEN MOUNTED. BALL PLATE WILL BE LEVEL WHEN MOUNTED.



NOTE:
DIMENSION SHOWN IS FOR A 96 CAL W/12.5\"/>



<p>DESIGNTECH ENGINEERING, LLC</p> <p>910 Grove Street P.O. Box 293 Beaver Dam, WI 53916 (920) 887-3128 FAX (920) 356-1322 dan@dtusa.com</p>	<p>MOTO GUZZI TRAILER HITCH CONSTRUCTION DIMENSIONS FITS LATE 90'S CAL 1100'S, EV'S AND PROBABLY OTHERS</p>		
	<p>DRAWN BY: DJP</p>	<p>DATE</p>	<p>SHEET</p>
	<p>APPROVED: DJP</p>	<p>MARCH 12, 2004</p>	<p>1 OF 1</p>
	<p>SCALE: 1" = 4"</p>	<p>JOB NO. ENJOY!</p>	